



# Wanted: A silver bullet for the greenhouse gas problem

Those of us in the electricity business are quite concerned about the problem of greenhouse gases in the atmosphere and what can be done to reduce them. If you are a consumer of electricity, you need to be concerned, too, because you'll have to pay to fix the problem.

Many scientists believe the growing volume of greenhouse gases is contributing to a warming of the earth's atmosphere and changes in our climate, melting of the polar ice caps and rising sea levels.

One of the main contributors to the increase in greenhouse gases is coal and what happens to coal when it is burned for fuel.

Presently, 50 percent of the nation's electricity supply and 62 percent of electric co-op power requirements come from coal.

But burning coal is a dirty process. For one thing, it produces carbon dioxide. According to the Center for Global Development, the No. 1 carbon dioxide polluter in all of Tennessee is the Tennessee Valley Authority's Cumberland Fossil Plant in Stewart County, releasing 19,600,000 tons of carbon dioxide into the atmosphere last year. The Gallatin Fossil Plant is fourth on the list, at 6,817,369 tons.

Some in Congress want us to build new earth-friendly power plants. The cost for those plants would be paid by higher rates.

Despite rising costs, power plants built in the near-term will burn coal more cleanly and efficiently than ever before. Even more encouraging, con-

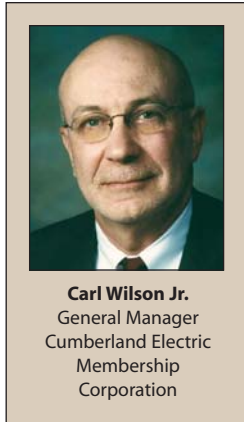
cerns over coal's contribution to climate change could be alleviated within a decade if power plants that capture carbon dioxide gas before it goes up a smokestack, compress it and then pump it deep underground for permanent storage become available — a real possibility if Congress provides sufficient funding for the necessary research and development.

Nuclear energy also remains part of the solution, even though only a handful of nuclear power plants have come on-line in this country over the past

20 years, and none have been ordered since the 1970s. Nuclear power — which emits only clean water vapor — generates 20 percent of all electricity in the U.S. and about 15 percent of electric co-op power needs. Estimates hold that it will take 10 years to bring a single nuclear reactor on-line.

Providing more electricity and dealing with climate change are important challenges our country faces. Our commitment to you as we strive to keep the lights on will be encouraging lawmakers and regulators to seek out practical, long-term remedies to our nation's energy problems based on new technology — solutions that will allow us to continue providing safe, reliable and affordable power in an environmentally responsible fashion.

Electric co-ops have no magic bullet to offer — only our hard work and a commitment to your best interests. But as we have done for seven decades, we will continue to put you, our members, first.



**Carl Wilson Jr.**  
General Manager  
Cumberland Electric  
Membership  
Corporation

## CEMC Management and Staff

Carl W. Wilson Jr., General Manager  
Jim Coode, Operations Manager  
Lynne Wilson, Administrative Services Manager  
Chris Davis, Engineering Manager  
Barbara Harper, Member Services Manager  
Randy Holt, Eastern Regional Manager  
Kevin Cain, Western Regional Manager

CEMC Co-op News Editor  
Scott Shelton  
P.O. Box 3300  
Clarksville, TN 37043

Open Monday – Friday, 7:30 a.m. – 4:30 p.m.  
800-987-2362

Ashland City office  
Nicky Roberts, District Operations Supervisor

Clarksville office  
J.D. Bumpus, District Operations Supervisor

Dover office  
Terry Odom, District Manager

Gallatin office  
Allan Cook, District Manager

Portland/White House offices  
Homer Mayes, District Operations Supervisor

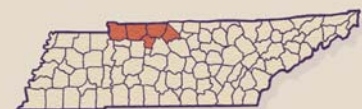
Springfield office  
Larry Richardson, District Manager

## CEMC Board of Directors

Joe H. Whitaker, Sumner County,  
President  
Wesley H. Aymett, Cheatham County,  
Vice President  
Shela K. Williams, At Large,  
Secretary-Treasurer  
Jerry T. Peacher, Stewart County,  
Assistant Secretary-Treasurer  
Gene E. Cook, Robertson County  
Stephen E. Douglass, Stewart County  
Michael A. Mason, Robertson County  
C. David Morgan, Montgomery County  
Carrol O. Poole, Montgomery County  
Tommy G. Whittaker, Sumner County

## Mission Statement

Cumberland Electric Membership Corporation is committed to providing dependable, affordable electric service through the expertise and dedication of competent leadership and a well-trained and responsive workforce.



## Cumberland Electric Membership Corporation

Serving Cheatham, Montgomery,  
Robertson, Stewart and Sumner  
counties.



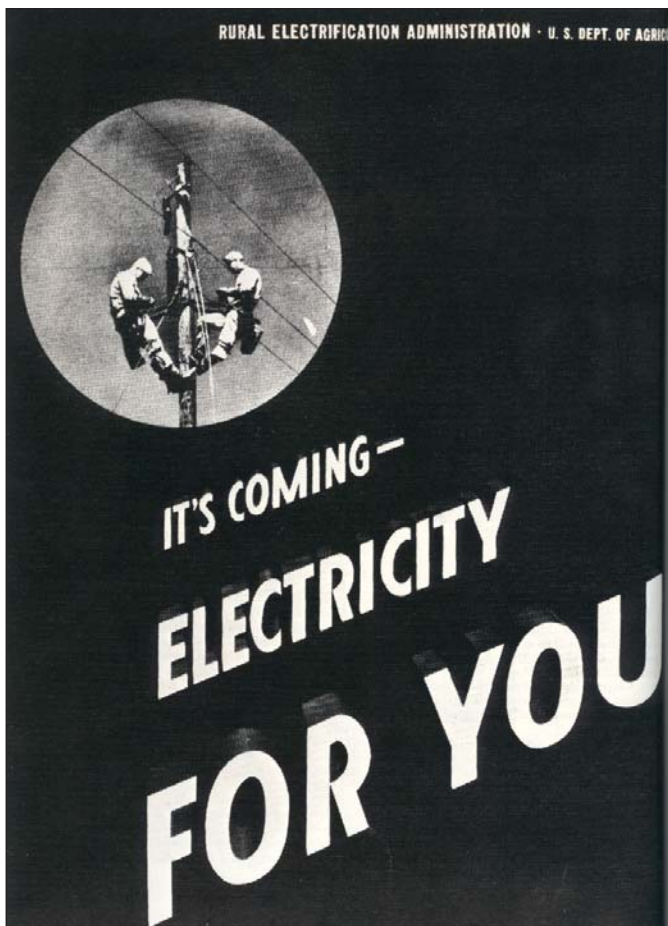
## 70 years into its mission, CEMC still brings electric power to rural Middle Tennessee

Seventy years ago this month, Cumberland Electric Membership Corporation began to fulfill the dream of rural citizens to enjoy the same 20th-century progress urban citizens already had: electric power! CEMC opened its doors for business on March 3, 1938.

Even though Thomas Edison's invention — the incandescent lamp (also known as the light bulb) — had been around since 1879, not all citizens were able to take advantage of it at the same time.

The following passage comes from "The Next Greatest Thing - 50 Years of Rural Electrification In America," published in 1984 by the National Rural Electric Cooperative Association:

*"Part of the society of Humankind, the rural people of America, was not to know electricity. They were told that, for them, it was not a commercial proposition. There was no profit in it. And because there was no profit, there were no lights for rural people.*



A flyer from the 1930s promoting rural electrification.

*"Because there was no electric connection, because it was unattainable under the established economic order of the time, a great gulf developed. Two nations, two classes, two centuries: One of light, one of darkness. One 'backward,' one 'enlightened.'"*

It was not until 1935 that a bill was passed authorizing a financing plan to provide electric power in rural areas. The following year, President Franklin D. Roosevelt, who oversaw creation of the Tennessee Valley Authority in 1933, signed into law the Rural Electrification Act. One of the act's sponsors was Nebraska Sen. George Norris, considered the "Father of Rural Electrification," who said:

*"I had seen first-hand the grim drudgery and grind, which had been the common lot of eight generations of American farm women. I had seen the tallow candle in my own home, followed by the coal-oil lamp. I knew what it was to take care of the farm chores by the flickering, undependable light of the lantern in the mud and cold rains of the fall and the snow and icy winds of winter.*

*"I had seen the cities gradually acquire a night as light as day.*

*"I could close my eyes and recall the innumerable scenes of the harvest and the unending punishing tasks performed by hundreds of thousands of women, growing old prematurely, dying before their time, conscious of the great gap between their lives and the lives of those whom the accident of birth or choice placed in the towns and cities."*

According to CEMC records, "Local farmers waited with open arms ... and wasted no time in taking advantage of the new Rural Electrification Administration."

But first they had to organize. Several Farm Bureau members in Montgomery County, led by M.C. Northington, W.D. Hudson and W.C. Jackson, provided the driving force to create a member-owned electric cooperative.

"Forming the cooperative was a big job," said Northington, who was to become the first general manager of CEMC. "We had scores of meetings, knocked on hundreds of doors, surveyed miles of county roads, but we finally succeeded in getting a charter."

The charter creating CEMC was recorded with the state of Tennessee on April 22, 1938.

The newly chartered organization held its first business meeting on April 25, 1938. At that meeting, trustees were elected, bylaws were adopted, an attorney was appointed, a bank and an engineer were selected and a \$250,000 REA construction loan was applied for.

Today, CEMC serves more than 87,000 members, some of whom undoubtedly recall what life was like before electricity came to their part of the world.



## Arbor Day signals the end of winter and time to plant trees in the best location

National Arbor Day is the last Friday in April, but many states observe Arbor Day on different dates according to their best tree-planting times. In Tennessee, Arbor Day is observed on the first Friday in March, which is March 7 this year.

Before you start any springtime tree planting, Cumberland Electric Membership Corporation reminds you of a very important rule:

***Do not plant trees or other large vegetation underneath or too close to electric power lines!***

Why is this so important? In just a few years, those trees will grow tall, and their limbs will spread out into the power lines. When the wind blows or an ice storm comes, the limbs will snap and could fall onto the lines, causing a power outage.

The job of maintaining CEMC's 8,500 miles of line belongs to our right-of-way staff composed of four full-time employees and 13 contract crews. Gerry Hester, a 26-year employee, is the right-of-way supervisor with primary responsibility for all of CEMC's eastern division encompass-



**Right-of-Way Assistant Jimmy Luffman, left, goes over the day's schedule with Nick Simpson, foreman on one of CEMC's contract tree-trimming crews.**

ing Robertson and Sumner counties. Jimmy Luffman, an eight-year employee, joined the staff last year as right-of-way assistant with responsibility for the western division — Cheatham, Montgomery and Stewart counties. The other full-timers are Carlos Lackey and James "Jungle" Whitehead, each with nine years' experience.

Right-of-way maintenance is a \$3 million yearly commitment for CEMC because of the vital role it plays in keeping the lights on.

To minimize the chance for a tree-related power outage, it is best to plant small trees at least 20 feet away from either side of a power line. A 40-foot buffer is recommended for medium-size trees, and a 50-foot buffer should be observed for larger species. Please contact CEMC (800-987-2362) if you have any questions about potential tree-power line conflicts.

For a free copy of a brochure, "The Right Tree for the Right Place," write to The National Arbor Day Foundation, 100 Arbor Ave., Nebraska City, NE 68410, or go to the Web site, [www.arborday.org/trees/righttreeandplace/righttree.cfm](http://www.arborday.org/trees/righttreeandplace/righttree.cfm).



**A three-man crew from Wolf Tree Experts works to clear the right-of-way along the Tennessee Waltz Parkway in Ashland City. From left are Nick Simpson, foreman, Felix Salamanca (in bucket) and Anthony Clark.**



## CEMC video conferencing capability may be model for statewide organization

The cameras, microphones and monitors used by Cumberland Electric Membership Corporation for a variety of training purposes has caught the attention of David Callis, director of government affairs for the Tennessee Electric Cooperative Association (TECA).

Recently, Callis observed the Internet-based video conferencing system in action when he attended an employee training session at CEMC's White House business office. He met with General Manager Carl Wilson and Network Administrator Greg Christy at the Clarksville Headquarters the next day and got an idea of what it would cost to purchase a similar system for TECA.



**David Callis of the Tennessee Electric Cooperative Association, right, mans the controls as CEMC Network Administrator Greg Christy demonstrates the cooperative's video conferencing capability. General Manager Carl Wilson looks on at left.**

impressive as heck!"

Callis is expected to thoroughly evaluate TECA investing in video conferencing technology. Meanwhile, Christy plans to conduct a demonstration of video conferencing technology for other TECA officials in the near future.

Callis reeled off a list of possible ways the statewide organization could use video conferencing, all to the benefit of cooperative managers and others who frequently must travel to Nashville to attend meetings.

"TECA could greatly benefit from having a system like this," Callis said. "As small as (the equipment) is, it's as

## Consumers cautioned to beware of counterfeit electrical products

A "fake" purse or watch may make you angry, but they don't carry the risk of injury or death. On the other hand, counterfeit electrical products can be dangerous. Counterfeit circuit breakers, power strips, extension cords, batteries and holiday lights can cause fires, explosions, shocks and electrocutions.

In recent years, the Consumer Product Safety Commission (CPSC) has recalled more than 1 million counterfeit electrical products, including circuit breakers that did not trip when overloaded, cell phone batteries without a safety device in the circuitry to prevent overcharging and extension cords with mislabeled, undersized wiring that overheated.

Counterfeits can be extremely difficult to spot. They could be a knock-off of a name brand product or bear an unauthorized certification marking. Here are some tips to protect yourself from the dangers of counterfeit electrical products:

- Scrutinize the product, packaging and labeling. Look for certification marks from the manufacturer and an independ-

ent testing laboratory such as Underwriters Laboratories (UL) or the Canadian Standards Association (CSA). Trademarked logos that look different than usual may signal a counterfeit.

- If the price is "too good to be true," it could be because the product is inferior and unsafe.

- Be careful when buying from an unknown source such as a street vendor. Use established stores who purchase their goods from legitimate distributors and genuine manufacturers.

- Check the warning label. It should be free of grammatical errors and not conflict with information elsewhere on the package.

- Avoid no-name products.

- Look for the name and contact information of the manufacturer. If you find the information missing, consider purchasing electrical products elsewhere.

- Sign up for CPSC e-mail alerts at [www.cpsc.gov](http://www.cpsc.gov) to stay informed about product recalls.





## CPR training is for everyone at CEMC



**Mike Toth is a GIS/mapping technician in the CEMC Headquarters building. The fact that Toth works a desk job does not exempt him from being certified in cardio-pulmonary resuscitation (CPR) along with every other CEMC employee, whether they work inside or outside jobs. Toth is shown here going through breathing motions on a dummy during a required training exercise.**

## A free grill will go to seven lucky customers

All Cumberland Electric Membership Corporation members are invited to their local district business office for a picnic-style meal of hot dogs, chips, drinks and cookies. Prize drawings will be held for a new Meco Deluxe Electric Cart Grill at each location. You must register in person, but you do not have to be present to win!



The hours at each location are 10 a.m. until 2 p.m. We're looking forward to seeing you and showing our appreciation on these dates:

April 22	White House, 2285 Highway 31-W
April 23	Gallatin, 745 N. Blythe St.
April 24	Clarksville, 1940 Madison St.
April 28	Springfield, 1201 Fifth Ave. W.
April 30	Portland, 207 S. Broadway
May 1	Ashland City, 315 N. Main St.
May 2	Dover, 420 Spring St.



**Walter Hackney, left, of Action Air Conditioning Service is glad he decided to attend a recent Quality Contractor Network luncheon in Clarksville. Hackney was presented a certificate for \$250 worth of co-op advertising from Todd Thompson, right, of the Tennessee Valley Authority. That means TVA will match Action Air's heat pump advertising dollar for dollar up to \$250. The event was sponsored by Cumberland Electric Membership Corporation and Clarksville Department of Electricity to express appreciation for the work performed by Clarksville-area heat pump retailers and installers.**

**If you're in the market for a new energy-efficient electric heat pump, be sure to take advantage of CEMC's heat pump program. Qualified applicants can borrow up to \$10,000 at 8-percent interest and take up to 120 months to pay it back in convenient monthly installments added to your electric bill.**

**For an application or for more information, please call us at 800-987-2362.**

