

Cumberland Electric Membership Corporation

CEMC Management and Staff

Jim Coode, General Manager
Randy Holt,
Operations Division Manager
Lynne Wilson,
Admin. Services Div. Manager
Chris Davis,
Engineering Division Manager
Michael Batson,
Financial Services Manager
Barbara Harper,
Member Services Manager
Howard Whitaker,
District Operations Manager

CEMC Co-op News Editor
Scott Shelton
P.O. Box 3300
Clarksville, TN 37043

Open Monday-Friday,
7:30 a.m.-4:30 p.m.
800-987-2362

Ashland City office

Nicky Roberts,
District Operations Supervisor

Clarksville office

Kenny Davis,
District Operations Supervisor

Dover office

Terry Odom,
District Operations Supervisor

Gallatin office

Allan Cook,
District Operations Supervisor

Portland/White House offices

Homer Mayes,
District Operations Supervisor

Springfield office

Larry Richardson, District Operations Supervisor

CEMC Board of Directors

Joe H. Whitaker,
Sumner Co., President
Wesley H. Aymett,
Cheatham Co., Vice President
Shela K. Williams,
At Large, Secretary-Treasurer
Jerry T. Peacher, Stewart Co.,
Assistant Secretary-Treasurer
Gene E. Cook, Robertson Co.
Stephen E. Douglass, Stewart Co.
Michael A. Mason, Robertson Co.
C. David Morgan, Montgomery Co.
Carrol O. Poole, Montgomery Co.
Tommy G. Whittaker, Sumner Co.

Mission Statement

Cumberland Electric Membership Corporation is committed to providing dependable, affordable electric service through the expertise and dedication of competent leadership and a well-trained and responsive workforce.

AS I SEE IT

Manager's Viewpoint

Join us at Rossvie High School

It's nearly 100 degrees outside as I write this invitation asking you to attend the 73rd annual meeting of Cumberland Electric Membership Corporation. But my eyes are on Sept. 24, the date of the meeting and the first full day of autumn! Surely our weather will be a little cooler by then!

One thing is certain: We're planning a "cool" event for our members to be part of on that day.

Rossvie High School in Clarksville has proven to be a popular and easily accessible location for our meeting. It is spacious, and everything is situated close to the action.

Doors will open at 8 a.m. for registration and a complimentary breakfast. Those arriving early will have time to browse through the prizes that will be given away. Each member is entitled to

register for one prize, and, yes, you must be present to win.

During the business session you will be brought up-to-date on various cooperative issues that have taken place during the last fiscal year. This is also when the results of our director elections will be announced. Four seats on CEMC's board of directors are open this year, and the candidates seeking those seats are pictured on the opposite page.

If you can't come to the meeting, please visit your local CEMC office on Friday, Sept. 23, and vote early. You'll still get a favor for your trouble.

On behalf of our board, management and employees, I invite you to join us for our

2011 annual meeting. We look forward to sharing our "cooperative spirit" with you!



Jim Coode
General Manager
Cumberland
Electric
Membership
Corporation



YOUR BOARD OF DIRECTORS — From left are, seated, Joe H. Whitaker, president; Wesley H. Aymett, vice president; Shela K. Williams, secretary-treasurer; and Jerry T. Peacher, assistant secretary-treasurer. Standing: Jim Coode, general manager; Carrol O. Poole; Tommy G. Whittaker; Michael A. Mason; C. David Morgan; Gene E. Cook; and Stephen E. Douglass.

Four directors seek new terms on board

Four seats on the cooperative's board of directors will be determined as part of the business to be conducted during Cumberland Electric Membership Corporation's 2011 annual meeting. Balloting will begin Friday, Sept. 23, at all CEMC district business offices for those unable to attend the meeting on Saturday. Voting will continue at Rossvie High School only on Saturday up until the start of the business meeting.

Nominated to serve new three-year terms are the following incumbent directors:

Jerry T. Peacher of Indian Mound is the nominee from North Stewart County, an area he has represented since 1974. For 26 years, Mr. Peacher has served as assistant secretary-treasurer on the board.



Mr. Peacher

Mr. Peacher is retired following a 39-year career with the Stewart County Board of Education. As an educator, Mr. Peacher was a school teacher, principal, transportation supervisor and director of vocational education. He is a graduate of Murray State University, is an active Mason and member of Indian Mound United

Methodist Church. He also holds a director's certificate from the National Rural Electric Cooperative Association (NRECA).

Carrol O. Poole of Clarksville is the nominee from North Montgomery County. Mr. Poole is seeking his fifth term as director after having first been elected to the position in 1999.

Retired from Poole Brothers Tile Company, which he owned for 38 years, Mr. Poole is currently active with The Gideons International and Shady Grove Free Will Baptist Church. He is a graduate of Clarksville High School and a credentialed cooperative director as determined by NRECA.



Mr. Poole

Mr. Poole and his wife, Mary, are the parents of four grown children.

Joe H. Whitaker Sr. of Gallatin is the nominee for South Sumner County. Mr. Whitaker joined the CEMC board in 1999 and is seeking his fifth term. Since 2000, Mr. Whitaker has served as president of the board of directors. He is a credentialed cooperative director and also holds a board leadership certificate from NRECA.

Mr. Whitaker is a real estate property manager, an occupation he has practiced for more than 30 years. He is a graduate of Eastern Kentucky University.



The 2011 Nominating Committee met on July 6. All incumbents were nominated for re-election. Committee members are, from left, Ray Grubbs, Robertson County; Mike Luton, Stewart County; Edwina Shemwell, Stewart County; Donna Lancaster, Stewart County; Eddie Swan, Sumner County; Robert Lyle, Montgomery County; and Edward (Ned) Douglass, Sumner County.

Mr. Whitaker is active in numerous civic organizations, including service on the Tennessee Electric Cooperative Association board of directors, United Chambers of Commerce, Gallatin Kiwanis Club, Gallatin Chamber of Commerce, Sumner Academy, Leadership Sumner and Cairo Community Club. He attends Northeast Church of Gallatin/Hendersonville. He has two grown children and one grandchild.



Mr. Whitaker

Shela K. Williams of Bumpus Mills in Stewart County is the nominee for the lone at-large seat on the 10-member board of directors. Mrs. Williams is seeking her fifth term as director after first joining the board in 1999. She holds board leadership and credentialed cooperative director certificates from NRECA and since 2004 has served as secretary-treasurer on the CEMC board.



Mrs. Williams

Mrs. Williams is employed by F&M Bank in Clarksville where she is vice president of marketing/branch administration. She is a graduate of Leadership Clarksville, the Tennessee School of Banking, the Southeastern School of Sales Leadership at Vanderbilt University and the American Institute of Banking.

She is married to James S. Williams, and the couple has one grown son and one granddaughter.

Look at what we're giving away!



Gatlinburg Retreat:
Two nights for two at the
Gatlinburg Clarion Inn &
Suites
800-933-0777
www.clariongatlinburg.com

*Cool Springs retreat: One
night for two at the Em-
bassy Suites at Cool
Springs*
615-515-5151
www.nashvillesouth.em-
bassysuites.com



University of Tennessee sports package

THE GRAND PRIZE:
*ENERGY STAR-rated washer and dryer
with pedestals*



*Front Porch Haven:
Includes a pair of Hinkle
rocking chairs*



*Scholarships: Six college
scholarships worth \$500 will
be given away.*

Electric bill credits valued from \$50 to \$250



*Home Entertainment
Package includes a
32-inch energy right
LED high-definition
TV plus a Blu-Ray
player and the movie
"Secretariat" for all
the family to enjoy*

*Pick Tennessee
Products Package
includes a Windmill
quilt made by Bona
Perry, a handwoven
basket by Debby
Johnson, Hinkle
rocker plus other
Tennessee products*



Nobody goes home empty handed!



Each member attending CEMC's 2011 annual meeting or who participates in early voting the day before the meeting will receive this cargo box, which can be used to keep items from sliding around in your vehicle. As the photo illustrates, it is great for keeping loose grocery items together. The cargo box can also be used as a file cabinet for important papers!

Other favors you will receive include a compact fluorescent lightbulb and a 2012 CEMC calendar.

Everyone wins when they attend the CEMC annual meeting!

Youth Corner features scholarship dollars

A popular feature of the Youth Corner at past annual meetings has been the drawing for \$500 college scholarships. Again this year, six scholarships will be awarded.

The scholarships can be won by traditional or nontraditional students. There are no restrictions on college of attendance. **The student does not have to be present to win, but the member registering for the scholarship (the student's spouse, parent, etc.) must be present and provide the student's college of attendance so we can verify enrollment.** Once enrollment has been verified, a check will be mailed to the member. Please note that those registering for the scholarships will not be eligible to register for any other major door prize as the scholarships are considered major door prizes.

The Youth Corner will again include activities for children of all ages. Louie the Lightning Bug, face-painting and giant inflatables will be available for the entertainment of smaller children, and older kids can register to win bicycles and gift cards.



Some lucky children will be taking home brand new bicycles! The bikes range in size from a Radio Flyer tricycle for tiny tots up to a 24-inch six-speed mountain bike.

Don't miss the electric safety demonstration outside!

There's something for everyone at CEMC's 2011 annual member meeting.

CEMC calendar to display student artwork



*East Region Overall Winner — Erin Sower,
11th grade, Jo Byrns High School*



*West Region Overall Winner — Presley Seeley,
12th grade, Stewart County High School*

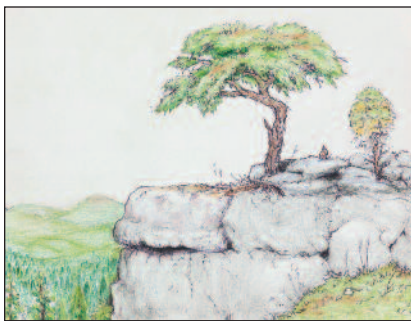
The 2012 Cumberland Electric Membership Corporation calendar will once again be filled with award-winning artwork from students across our service area.

Due to the overwhelming contest participation, this year CEMC will be offering two different wall calendars, one representing the East Region and one the West Region as well as pocket calendars with six different designs. This change allows for more students' talents to be recognized

and rewarded. Above is the overall winning entry from each region, and below are the six winning entries for the pocket calendars.

Mark your 2011 calendars for Nov. 1 to make sure you pick up a free copy of the new CEMC calendar at your local district business office. We are proud to spotlight the talent of so many of our youth, and we thank everyone who contributed, especially the teachers who encouraged the students to participate.

To see all of the student calendar artwork, please visit www.cemc.org.



*Stuart Snyder
Clarksville High School*



*Brooke Trammel
Portland High School*



*Katie Warren
Stewart County High School*



*Josiah Brown
Sycamore High School*



*Justin Wyatt
White House Heritage High*



*Jessica Rodriguez
Sycamore High School*